



DATASHEET

SEQUEL Data Warehouse: Powerful Data Warehousing Solutions

SEQUEL Data Warehouse (powered by RODIN) is a complete integrated suite of tools to build and manage data warehouses and data mart environments. Powerful Change Data Capture; Extract, Transform, and Load (ETL); and error management capabilities allow you to be in full control of your data.

Visual Development Environment

SEQUEL Data Warehouse developers enjoy a highly functional, visual integrated development environment for building and managing tables and ETL processes. The powerful visual development capabilities dramatically increase productivity and enable programmers and non-programmers to develop complex applications quickly and easily. Quickly draw lines to create relationships or mappings; drag and drop to add columns to a table or objects to an ETL definition.

Source Data from Virtually Anywhere

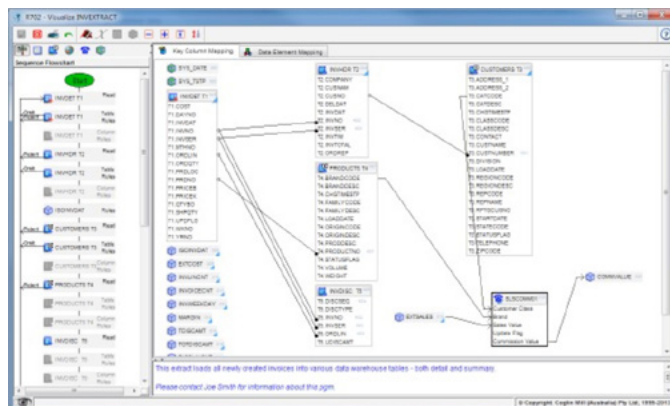
Whether your data resides solely on IBM i or is spread over disparate systems such as Microsoft SQL, Oracle, MySQL, DB2 on other platforms, is in text files (fixed and delimited) or XML files, Salesforce.com, and even many legacy sources, SEQUEL Data Warehouse can bring it all together into a single integrated database. You can select entire tables, or just the rows and columns you need to load.

Native i OS Run-Time Environment

SEQUEL Data Warehouse was developed from the ground up to build and manage data warehouse and data mart environments on IBM Power Systems and iSeries systems. No special hosted environment is required. SEQUEL Data Warehouse is seamlessly integrated with the IBM i operating system for secure, efficient, and simple implementation. This highly integrated native environment is a key differentiator that allows SEQUEL Data Warehouse to outperform all other ETL tools.

Open Database Standards

SEQUEL Data Warehouse creates and manages DB2 for i tables, indexes, and views. No proprietary data structures are created, so you can access a SEQUEL Data Warehouse data repository via SEQUEL, Query/400, SQL, or any one of the many desktop visualization and analysis tools available.



Highly productive visual IDE

Simplified Database Management

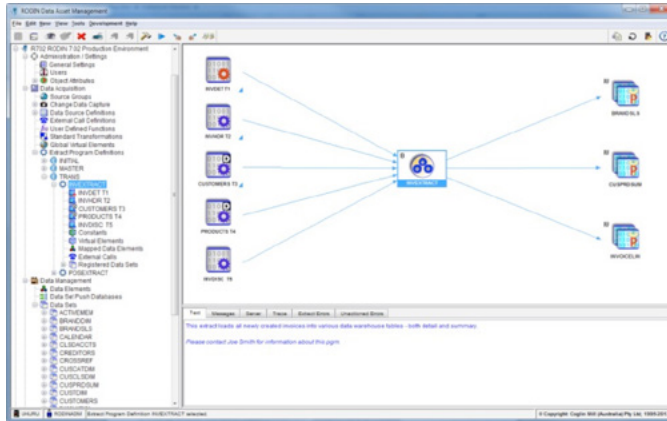
SEQUEL Data Warehouse takes the hard work out of creating and managing tables, indexes, and views. Build your database to any design: whether relational or star-schema, normalized or de-normalized. Integrated tools support bulk changes, reverse engineering of existing databases, and perform impact analysis and many other database tasks.

Comprehensive Error Management

Poor data quality is one of the major causes of failure in data warehouse projects. However, detection and management of errors can be a significant challenge. SEQUEL Data Warehouse solves this difficulty by providing extensive functionality to trap, report, correct, and re-process bad data, whether detected automatically or based on your own business rules.

Extensive Metadata Repository

Metadata is one of the keys to success in a data warehouse or data mart environment. It provides end users with a road map to the data while empowering people. SEQUEL Data Warehouse stores extensive technical, business, and administrative metadata for every object at many levels. Free-form text entry provides unlimited descriptive text. Publish the metadata as HTML for end user access, or export it to other tools.



SEQUEL Data Warehouse ETL overview

SEQUEL Data Warehouse’s active metadata controls all ETL processes to ensure that business rules and descriptions are visible to developers, analysts, and end users versus hidden in the program code.

Change Data Capture and Apply

SEQUEL Data Warehouse includes powerful Change Data Capture functionality that allows you to easily capture inserts, updates, and deletes from any DB2 for i table—either by comparison or via journal images, including remote journals. SEQUEL Data Warehouse CDC is highly customizable, with support for detailed and/or consolidated capture, replication, real-time or batch processing, filters, and business rules.

Powerful ETL Capabilities

SEQUEL Data Warehouse has an extensive array of capabilities to meet any ETL requirement:

- Scheduled or real-time ETL
- Easily filter and exclude unwanted source data
- Nested conditions, including if-else and case statements
- Extensive library of built-in functions
- User exits and user-defined functions allow unlimited extensibility, catering to the most complex transformation needs
- Automatic conversion of legacy date and time fields to true date or time format
- Date and time arithmetic, day of week, day of year functions, etc.
- Calendar functions, with support for working/non-working days
- Surrogate key and slowly changing dimension automation
- Output to multiple target tables in a single pass of the source data
- Efficiently perform both inserts and updates automatically as needed
- Output multiple target rows from a single source row
- Extensive audit information automatically generated and retained in metadata

Integrated Security

SEQUEL Data Warehouse integrates with standard IBM i security to enable full control over data access and all SEQUEL Data Warehouse functions. You can specify the owner, authorized user authorities, and use authorization lists to simplify access.

Multiple Environment Support

Multiple SEQUEL Data Warehouse environments can be installed on a single server to support development, testing and production environments, or data warehouse and data mart environments. Copy an entire environment or export/import any definition between environments.

Unsurpassed Performance and Scalability

SEQUEL Data Warehouse has been proven to scale from the smallest server right up to the largest SMP systems available today, where benchmarking has proven load rates well into the billions of rows per hour, using our unique parallel loading technology.

Change Management and Version Control

The SEQUEL Data Warehouse development client includes comprehensive change management functionality to ensure proper control over the development process. Comparison and impact analysis reports aid productivity and enable developers to implement changes quickly. Version control supports fallback to earlier versions if needed.

View Builder

Simplify data access by defining customized views over any number of tables or even other views using a guided view builder.

Automated Trending

Easily create data marts to perform trending on any SEQUEL Data Warehouse data set with automated scheduling (daily, weekly, monthly, etc).

Companion Product Integration

Automatically generate metadata for SEQUEL, DB2 Web Query, and other data access tools, including descriptive text and multi-table models.

Distribute to Other Databases

After loading the central data warehouse, easily push data mart tables out to any other database, whether on an IBM i or another platform entirely. You can even perform this in real time.

Find Out More Today

For more information, or to schedule a product demonstration, call **800-328-1000** or visit us online: **www.helpsystems.com/sequel**.