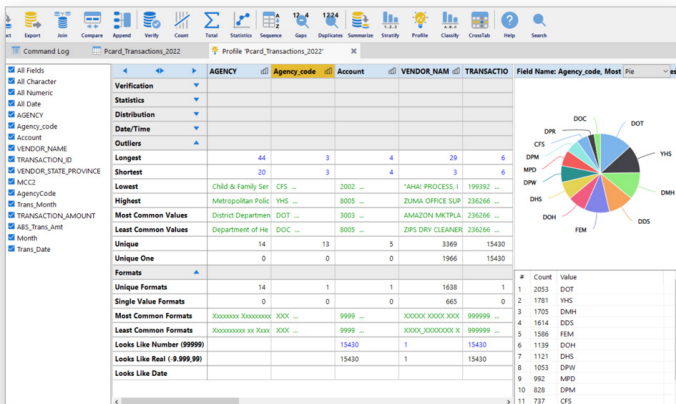




# Arbutus 8

Ensure Data Quality. Build Complex Analytics – Easily. Visualize Results & Engage Your Team.



## Extended Profile

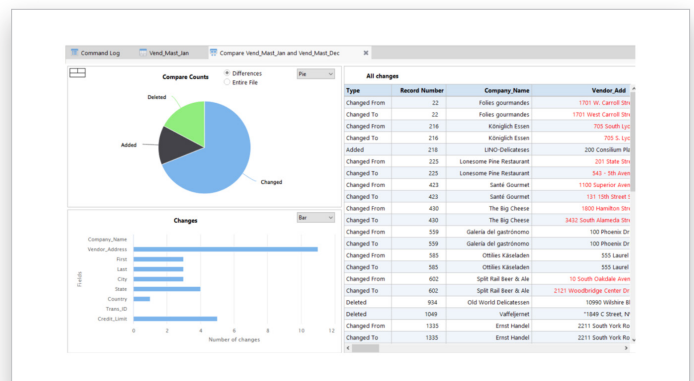
Explore and Assess Your Data with One Click

- » Access up to 60 attributes for each field across 6 categories - Verification, Statistics, Distribution, Date/Time, Outliers and Format

## Enhanced Results

Visualize your results quickly and easily

- » Access visual and tabular results automatically when running Compare, Classify, Stratify, and Aging commands

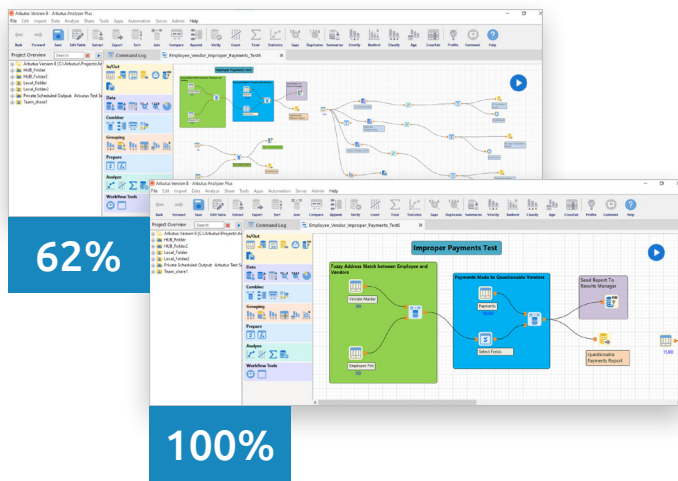
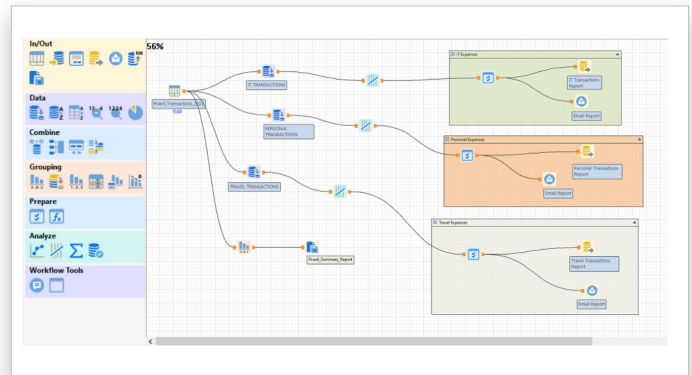


# Improved Analytic Workflows

## Containers

Group your commands into containers to help manage space and performance or to isolate a process

- » Expand or collapse, move within your canvas, or disable to help debug or drive more performance



## Zoom

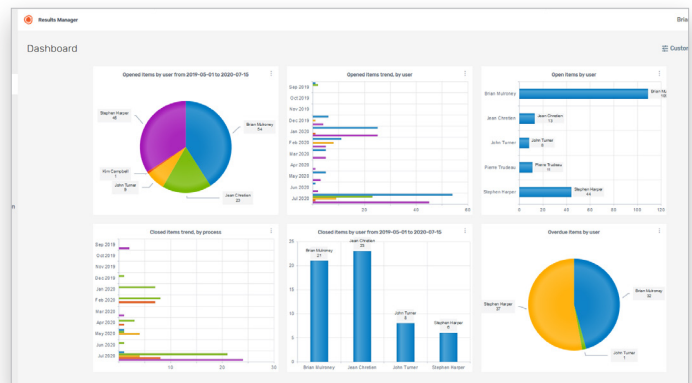
- » Navigate complex workflows easily by zooming in or out

## Copy/Paste

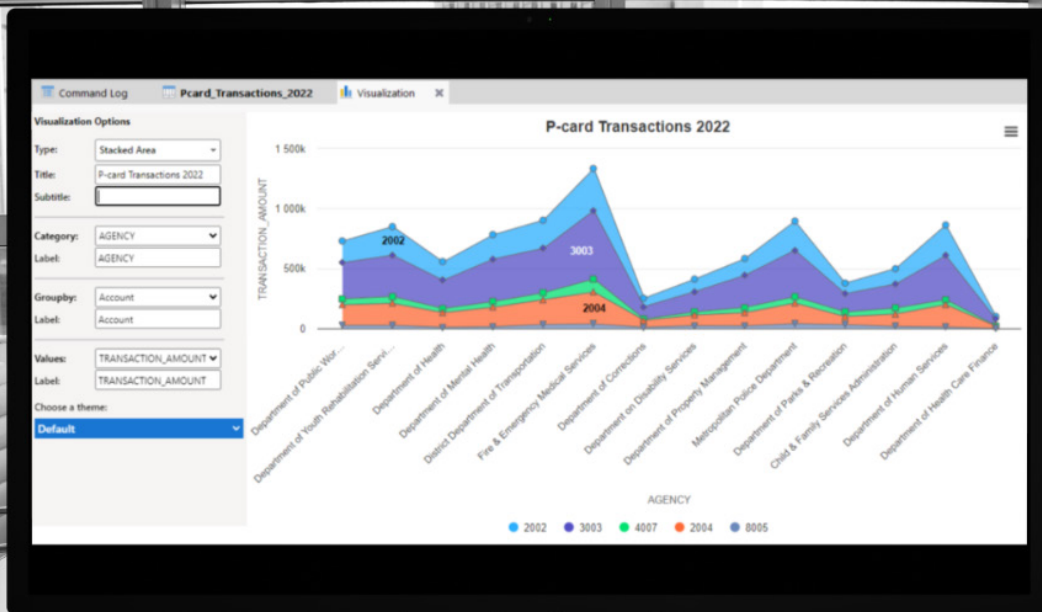
- » Speed up your work. Copy or paste one or more commands within your workflow or into a different workflow.

## Results Manager

- » Collect more detailed information for Results Manager activities by assigning customized Surveys
- » Analyze your survey data repository to zero in on Root Cause
- » Automate Email Notifications by user profile or activity. Let users know when an activity has been assigned to them - or when tasks are overdue.



# Create More Visualizations

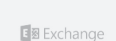
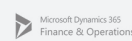


## New & Improved Pivot Table Design

» Drill down on Pivot Table Results

AGENCY	TRANSACTION... Trans_Date 1-Sun	TRANSACTION... Trans_Date 2-Mon	TRANSACTION... Trans_Date 3-Tue	TRANSACTION... Trans_Date 4-Wed	TRANSACTION... Trans_Date 5-Thu	TRANSACTION... Trans_Date 6-Fri	TRANSACTION... Trans_Date 7-Sat	TRANSACTION... Total
Child & Family Services Administration	2,044.10	62,499.24	102,713.33	99,010.15	116,402.17	105,220.45	12,019.34	499,908.78
Department of Youth Rehabilitation Services	11,030.51	141,931.28	176,516.65	157,255.90	163,991.77	144,297.55	55,691.28	850,714.94
Department of Corrections	262.67	51,199.84	38,589.10	53,043.02	69,968.62	36,529.06	3,327.17	252,919.48
Department of Health	3,912.90	71,643.94	101,415.45	105,541.32	126,692.75	131,975.50	14,318.94	555,500.80
Department of Health Care Finance	1,625.00	14,079.69	17,188.31	33,039.09	18,663.06	15,896.36	1,534.04	102,025.55
Department of Human Services	987.66	157,505.48	162,196.26	164,604.74	157,646.04	176,915.23	44,041.10	863,896.51
Department of Mental Health	15,488.51	85,218.29	164,086.45	189,751.98	149,511.41	149,610.02	28,886.11	782,552.77
Department of Parks & Recreation	1,145.82	70,653.87	59,981.13	93,753.81	64,592.80	73,074.70	15,781.09	378,983.22
Department of Property Management	6,611.89	76,821.41	147,182.32	118,599.48	106,481.09	116,077.09	10,319.01	582,092.29
Department of Public Works	2,538.06	126,650.77	156,659.19	150,655.20	115,041.82	159,819.08	17,341.83	728,705.95
Department on Disability Services	4,379.06	53,530.31	103,832.72	101,314.48	64,270.55	77,197.31	6,440.24	410,964.67
District Department of Transportation	4,510.15	123,972.29	187,120.73	164,495.72	174,444.34	212,432.77	37,293.42	904,269.42
Fire & Emergency Medical Services	9,017.68	244,980.43	290,377.96	336,712.69	209,239.02	216,024.40	29,972.11	1,336,324.29
Metropolitan Police Department	33,086.21	170,493.48	178,535.10	160,629.94	176,837.82	126,646.53	49,730.33	895,959.41
Total	96,640.22	1,451,180.32	1,886,394.70	1,928,407.52	1,713,783.26	1,741,716.05	326,696.01	9,144,818.08

## Even More Data Connectors



## More Features

### Set Timestamp Command

Log execution time of every command within your procedures

Optimize procedure performance during development

### Improved Table Selection for Append

Select multiple tables in fewer clicks

### Import Table Lists

Save time and simplify your future imports of complex data sources

### Date Field Slicing

Analyze dates without computed fields

### New Functions:

- **DATESLICE ()** Returns specified date slice in a datetime field.
- **TEXT ()** Displays text value of field when you are unsure about the exact contents

### Auto Removal of Duplicate Fields

Avoid field duplication when running Fuzzy Duplicates

### ConnectPlus API

ASCII and Unicode data

32 and 64 bit

### Improved Trigger Access

### Enhanced XLSX Import

Choose your columns/ fields to import

### Improved HUB Schedule Control Panel

### Local Compression

Speed up performance and save space



## Arbutus Analytics

*Arbutus delivers the very best in purpose-built audit analytics technology to meet the exacting demands of today's business environment. Auditors, business analysts, and fraud investigators rely on Arbutus to enhance their testing, analysis and compliance capabilities.*

### CONNECT WITH US



The Eniac Corporation, an authorized Arbutus Software.

#### Address:

#27 González Giusti Street,  
Suite 600  
Guaynabo, PR 00968

**Phone:** +1 (787) 793.4044

#### SALES INQUIRIES

[info@eniac-corp.com](mailto:info@eniac-corp.com)

#### TECHNICAL SUPPORT

[soporte@eniac-corp.com](mailto:soporte@eniac-corp.com)

## Arbutus 8 New Release

**Request Your Free Trial Today**