

Oracle Primavera Cloud

Oracle Primavera Cloud Service is a complete, cloud-first success platform for all stages of the project lifecycle. It empowers executives, project managers, and field professionals to deliver project - from inception through completion - more efficiently, consistently, and with greater confidence. Real-time visibility into project cost, schedule, risk and performance information - delivered through powerful and flexible dashboards and reports - enables project managers and stakeholders to make the right decisions at the right time. Native social collaboration, including discussion capabilities, allows project teams to communicate and collaborate effectively for more precise project planning, monitoring, and execution.

Oracle Primavera Cloud Service helps organizations improve project management by enabling them to prioritize, plan, manage, and evaluate projects via an integrated cloud-based solution.

PORTFOLIO MANAGEMENT

Oracle Portfolio Cloud provides a portfolio-based view of project information, including the proposed project pipeline, estimated budgets, capital spend, and fund allocation requirements. Portfolio managers can evaluate scenarios and arrive at an optimal plan to allocate financial budgets and other resources across multiple projects that are in-line with strategic goals. In addition, users can monitor portfolio health, track performance, and balance portfolios via alignment with corporate strategic goals.

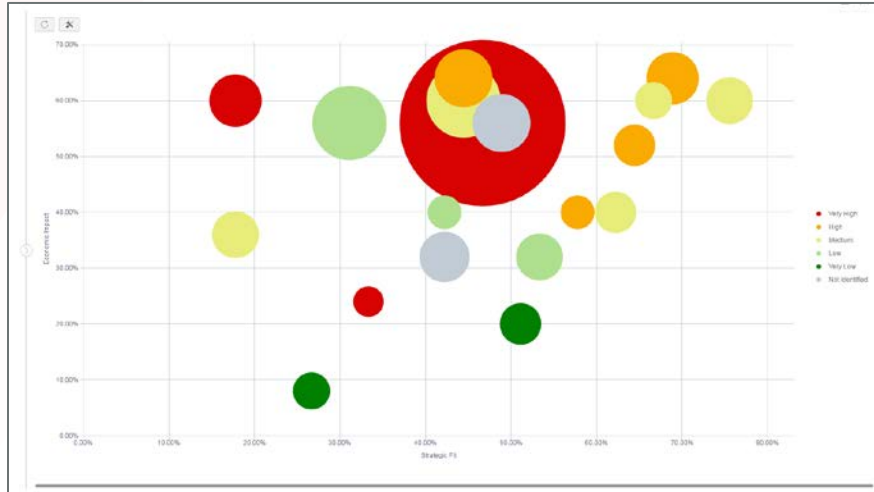


Figure 1A. Investor map capability for project portfolio evaluation

Oracle Portfolio Cloud portfolio management capability provides comprehensive, long-range tools for capital planning and budget approval across project portfolios. Configurable performance scorecards monitor the lifecycle of portfolios based on key metrics and enables portfolio planners, executives, stakeholders, and project managers to propose, inventory, prioritize, and select projects in a collaborative fashion and take corrective action when necessary.

Key Business Benefits

A cloud-based, mobile-ready solution, Oracle Primavera Cloud optimizes and integrates critical processes, scope, schedules, cost data, and documents across the organization. Users can easily configure its intuitive user interface to their unique business needs to increase adoption, minimize training, and deliver rapid time to value.

- Integrate portfolios, cost, schedule, and quality solutions under a single platform
- Improve decision making with end-to-end visibility across projects and proposals and real-time insight into portfolio activity, status, and metrics
- Enable continuous communication and collaboration between stakeholders
- Reduce complexity with a single solution for resource, risk, and document management
- Position business to benefit from combined power of Lean and Critical Path Method (CPM) scheduling
- Benefit from low cost of entry, rapid time to value, high performance, and extensibility



Figure 1B. Top-down portfolio prioritization for project ranking and selection

SCHEDULE MANAGEMENT

Project planning and scheduling are key elements of effective project management. A well-developed project schedule allows project managers to manage project milestones, deliverables, and timelines effectively.

Primavera Schedule is a cloud-based solution that is integrated with other Oracle Primavera Cloud modules to provide a complete project management solution.

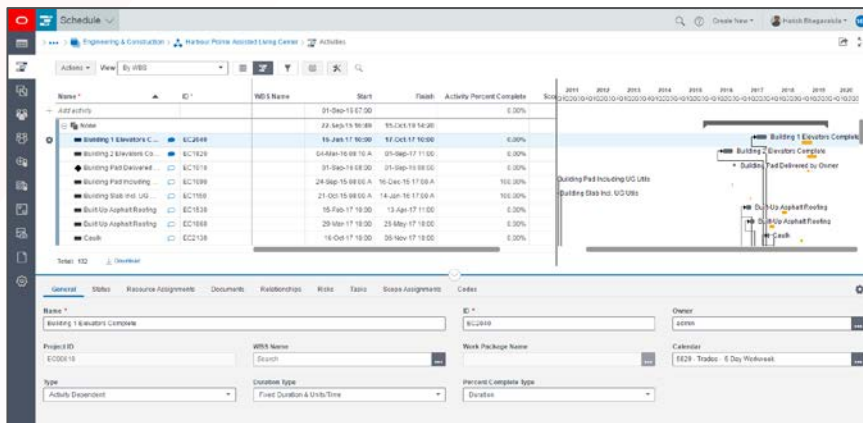


Figure 4. Plan and schedule projects and provide visibility across stakeholders.

Interactive Gantt charts allow planners, schedulers, and project managers to communicate a more accurate and complete graphical representation of a project's schedule in real time. The system also enables users to track project scope and resource assignment and proactively perform resource and role leveling.

RESOURCE MANAGEMENT

Oracle Primavera Schedule Cloud Service allows project managers to manage hierarchy-based resources and roles per project. Organizations also can choose to manage these roles and resources at an enterprise level and allow project managers to utilize them on need basis at project level.

with a cloud solution

- Save time and money and accelerate user adoption with an intuitive and flexible interface and simple deployment
- Improve productivity with mobile capabilities that provide access to data on the go
- Empower users with more autonomy and a greater contribution to value added work

Key Features

- Context-driven rich and lightweight user interface
- Global search and navigation to major functional areas
- Built-in workflows with an option to expand via configuration
- Web-based interface with no client installation or plug-ins
- Review and approval of updates to ensure project integrity
- Embedded analytics
- iPad and iPhone applications support updating project status online or offline
- Ability to access all project documents via a mobile device, mark them up, and save locally for offline access

Resources and roles can be assigned to activities as part of resource assignment capabilities, allowing project managers to resource load the project schedule.

Name *	ID *	Title	Status *	Email	Source Name	Default Units/Time	Unit of M
E&C Resources	E&C Resources		Active		Engineering & Construction	100.00%	
Subcontractor	Subcontractors		Active		Utilities	100.00%	
Trades	Trades		Active		Prime Corporation	100.00%	
Management	Management		Active		Prime Corporation	100.00%	
Engineering Department	Engineering		Active		Utilities	100.00%	
Purchasing Department	Purchasing		Active		Engineering & Construction	100.00%	
Corporate Resources	Corporate		Active		Engineering & Construction	100.00%	
Demo User	Demo User	Demo User	Active	demo.user@acmeinc.com	Prime Corporation	100.00%	
Product Development R...	Product Dev		Active		Engineering & Construction	100.00%	
Manufacturing Engineer...	ManufEng		Active		Engineering & Construction	100.00%	

Figure 5. Primavera Cloud Resource Management allows project managers to create and manage hierarchical roles

Resource Analysis can be performed to determine over and underutilization of both resources and roles. Visual representation of resource and role assignment analysis in the form of histograms will allow project managers to determine where resources are under or over utilized.

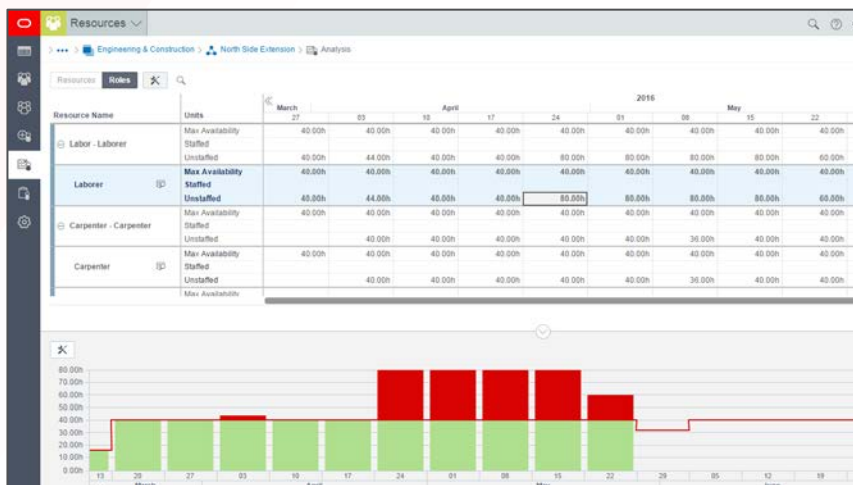


Figure 6. Perform Resource and Role analysis at project level.

Leveling can be performed on resource assignment to balance out resource or role assignment to minimize over or under utilization.

RISK MANAGEMENT

Risk Management provides the necessary tools that allow project professionals to manage risk easily and successfully. Features include:

- Risk register to view and prioritize project risk.

- Tools to define risk thresholds and scoring matrices for qualitative analysis.

Name	ID	Pre-Response Score	Status	Type	Pre-Response Probability	Pre-Response Schedule	Pre-Response Cost
Concrete supply constrained	R001	22	Active	Threat	50-100%	M (12,004 - 48,004)	\$ (2,000,000.00)
Site access restricted for 2 weeks	R002	18	Open	Threat	50-100%	M (12,004 - 48,004)	\$ (450,000.00)
New roof coating cuts roof install time	R003	18	Open	Opportunity	50-100%	M (12,004 - 48,004)	\$ (122,500.00)
Poor ground conditions	R004	20	Open	Threat	M (40.00% - 60.00%)	M (12,004 - 48,004)	\$ (87,500.00)
Failed electrical inspection	R005	4	Rejected	Threat	50-100%	M (12,004 - 48,004)	\$ (10,000.00)
Weather delay due to unusually wet	R006	30	Active	Threat	50-100%	M (12,004 - 48,004)	\$ (240,000.00 - 480,000.00)
Contractor financial instability	R007	22	Open	Threat	L (37.50%)	M (12,004 - 48,004)	\$ (122,500.00)
Permit delay	R009	18	Managed	Threat	L (20.00% - 40.00%)	M (12,004 - 48,004)	\$ (480,000.00 - 720,000.00)
Interior design changes	R010	1	Proposed	Threat	50-100%	M (12,004 - 48,004)	\$ (122,500.00)
Window manufacturing delay	R011	1	Proposed	Threat	50-100%	M (12,004 - 48,004)	\$ (87,500.00)

Shape	Minimum	Most Likely	Maximum	Exposure	Shape	Minimum	Most Likely	Maximum	Exposure	CDS Code	Cost Category
Uniform	390,000.00	600,000.00	362,500.00	Uniform	45,000.00	90,000.00	51,375.00	60,700			

Figure 7. Risk register and related response plan.

- Monte Carlo analysis on schedule data by incorporating risk data.
- Curves showing expected time and cost outcomes and the probability of achieving each one.



Figure 8. Monte Carlo-based histograms provide likely project outcomes based on potential risk, not just the planned schedule.

- Risk response plans to address project risks and establish post-response scenarios.
- Out-of-the-box bi-directional integration with Primavera P6 EPPM leveraging Primavera Gateway to provide schedule risk analysis.

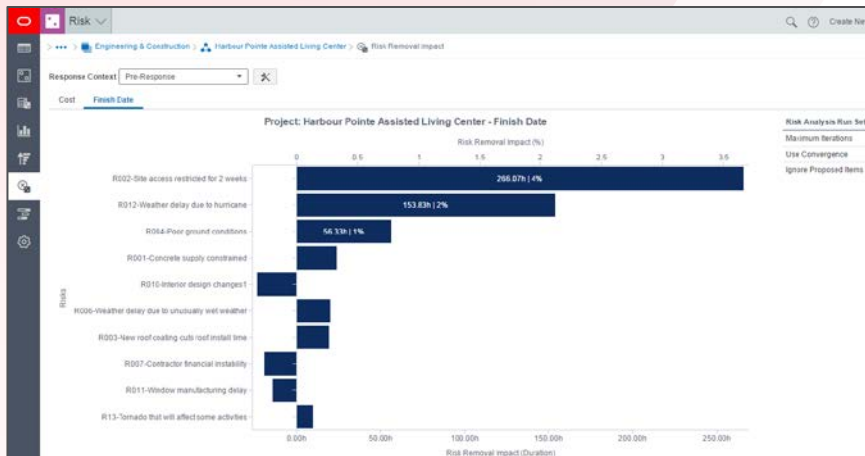


Figure 9. Primavera Cloud's tornado charts provide visibility into which risks have the greatest impact to your projects and programs.

- Risk Removal Impact analysis to identify key risk event that's preventing their schedules from performing as expected.
- Mean Impact Risk analysis to determine risk and activities that have greatest impact.

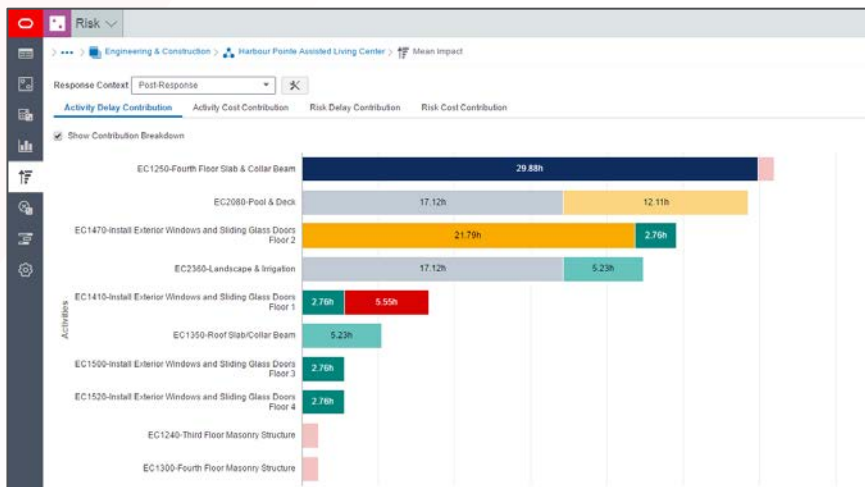


Figure 10. Primavera Cloud's Mean Impact charts provide a breakdown of the contributing causes to the activity's impact

- The risk sensitivity data is displayed for the project cost and finish date including viewing options for the sensitivity results.

LEAN TASK MANAGEMENT

The Oracle Primavera Lean Cloud's Task Management capability provides a set of tools to improve the detailed coordination, planning, and execution of work between planners, supervisors, and field workers. The tool enables field workers to decide the best way to execute their work with maximum efficiency and minimal waste.

The Work Plan interface allows planners, supervisors, and field workers to easily define, plan, and sequence their work according to the near-term objectives defined by the project schedule. LastPlanners® create tasks in the hopper for each activity in the planning period. Tasks are then dragged to the weekly planning board or future weekly bucket, using the project schedule's activities as a reference.

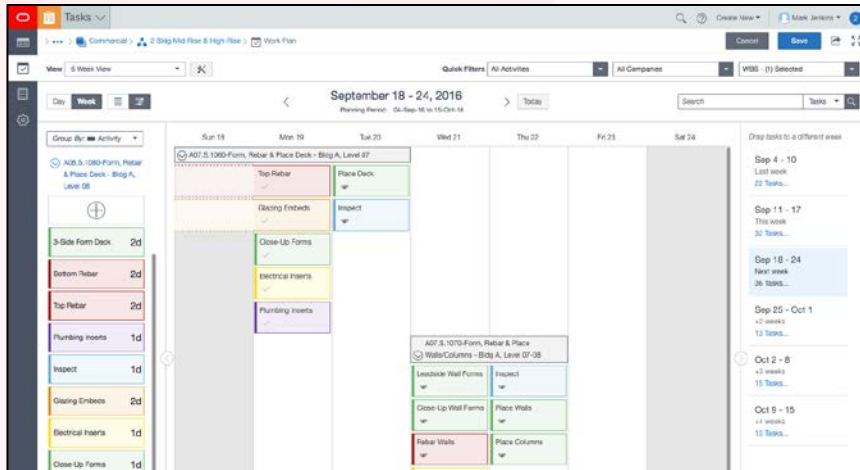


Figure 7A. The Oracle Primavera Lean work plan makes weekly planning simple

During the planning cycle, tasks can be dragged and placed on planning board. Drag a task to different weekly bucket. Commit to perform a task on a specific due date. Complete a task that is done. Recommit a task that is not done. Provide reasons for not completing a task as committed. Finally, monitor weekly planned percent complete and reasons metrics in dashboard.

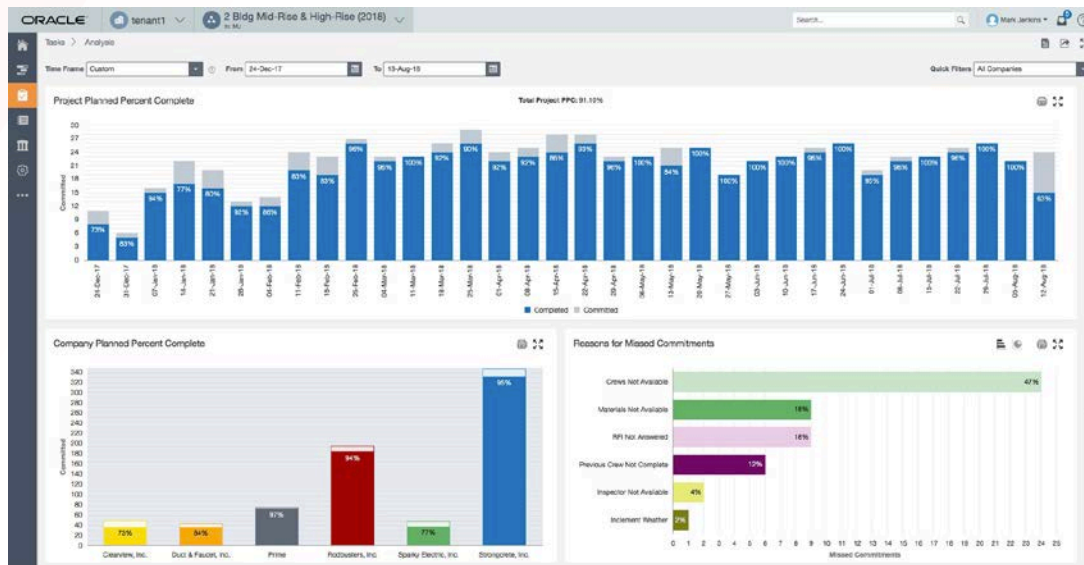
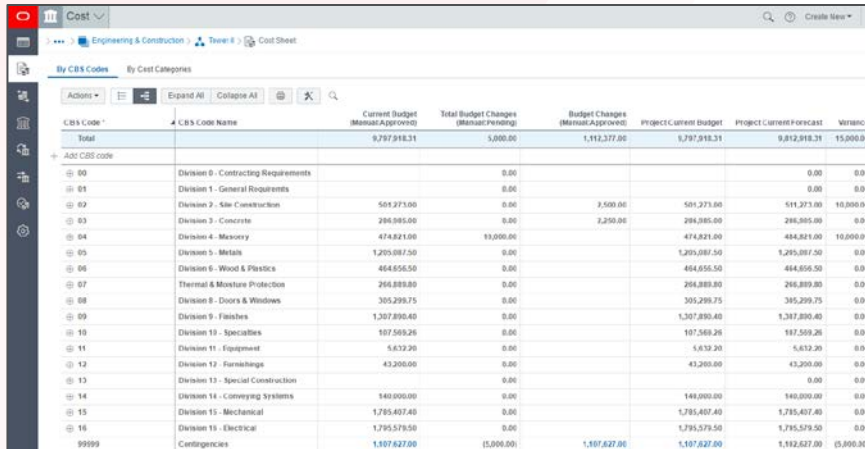


Figure 7B. Task analysis makes monitoring weekly performance and root causes simple

COST MANAGEMENT

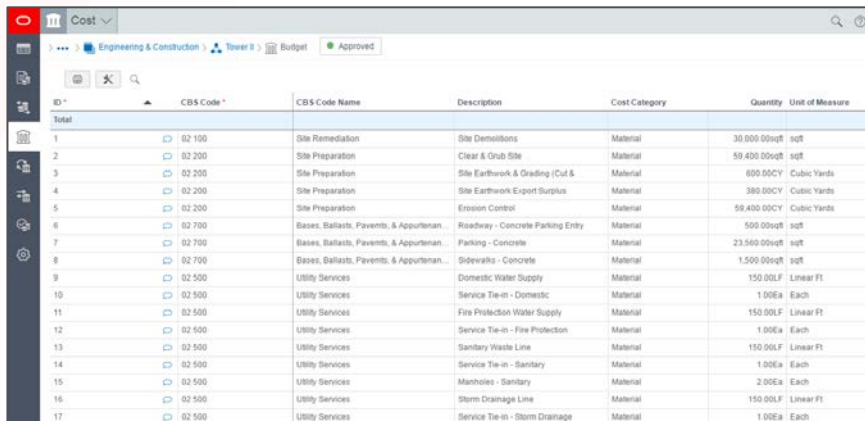
Cost management allows project managers and key stakeholders to capture budget, perform forecast analysis, and predict impending expenses to help reduce the chance of going over budget. Oracle Primavera Schedule Cloud Service allows project managers to manage the most basic to complex cost management scenarios with ease.



CBS Code	CBS Code Name	Current Budget (Manual Approval)	Total Budget Changes (Manual Approval)	Budget Changes (Manual Approval)	Project Current Budget	Project Current Forecast	Variance
Total		9,797,918.31	5,000.00	1,112,377.00	5,797,918.31	9,812,918.31	15,000.00
00	Division 0 - Contracting Requirements		0.00			0.00	0.00
01	Division 1 - General Requirements		0.00			0.00	0.00
02	Division 2 - Site Construction	501,271.00	0.00	2,500.00	501,271.00	511,271.00	10,000.00
03	Division 3 - Concrete	296,985.00	0.00	2,250.00	296,985.00	296,985.00	0.00
04	Division 4 - Masonry	474,821.00	10,000.00		474,821.00	484,821.00	10,000.00
05	Division 5 - Metals	1,205,087.50	0.00		1,205,087.50	1,205,087.50	0.00
06	Division 6 - Wood & Plastics	464,656.50	0.00		464,656.50	464,656.50	0.00
07	Division 7 - Thermal & Moisture Protection	266,889.80	0.00		266,889.80	266,889.80	0.00
08	Division 8 - Doors & Windows	305,299.75	0.00		305,299.75	305,299.75	0.00
09	Division 9 - Finishes	1,307,890.40	0.00		1,307,890.40	1,307,890.40	0.00
10	Division 10 - Specialties	107,569.26	0.00		107,569.26	107,569.26	0.00
11	Division 11 - Equipment	5,612.30	0.00		5,612.30	5,612.30	0.00
12	Division 12 - Furnishings	43,200.00	0.00		43,200.00	43,200.00	0.00
13	Division 13 - Special Construction		0.00			0.00	0.00
14	Division 14 - Conveying Systems	140,000.00	0.00		140,000.00	140,000.00	0.00
15	Division 15 - Mechanical	1,795,407.40	0.00		1,795,407.40	1,795,407.40	0.00
16	Division 16 - Electrical	1,795,579.50	0.00		1,795,579.50	1,795,579.50	0.00
9999	Contingencies	1,107,627.00	(5,000.00)	1,107,627.00	1,107,627.00	1,102,627.00	(5,000.00)

Figure 3A. Cost sheet functionality provides detailed cost data to ensure projects are staying on track

Oracle Primavera Schedule utilizes a spreadsheet-like interface to manage project budget, budget changes, and transfers. It also interacts with various project elements to provide a single location for managing project cost, including forecast information.



ID	CBS Code	CBS Code Name	Description	Cost Category	Quantity	Unit of Measure
1	02 100	Site Remediation	Site Demolitions	Material	30,000.00	sqft
2	02 200	Site Preparation	Clear & Grub Site	Material	59,400.00	sqft
3	02 200	Site Preparation	Site Earthwork & Grading (Cut & Fill)	Material	600.00	Cubic Yards
4	02 200	Site Preparation	Site Earthwork Export Surplus	Material	380.00	Cubic Yards
5	02 200	Site Preparation	Erosion Control	Material	58,400.00	Cubic Yards
6	02 700	Bases, Ballasts, Pavements, & Appurtenances	Roadway - Concrete Parking Entry	Material	500.00	sqft
7	02 700	Bases, Ballasts, Pavements, & Appurtenances	Parking - Concrete	Material	23,560.00	sqft
8	02 700	Bases, Ballasts, Pavements, & Appurtenances	Sidewalks - Concrete	Material	1,500.00	sqft
9	02 500	Utility Services	Domestic Water Supply	Material	150.00	Linear Ft
10	02 500	Utility Services	Service Tie-in - Domestic	Material	1.00	Each
11	02 500	Utility Services	Fire Protection Water Supply	Material	150.00	Linear Ft
12	02 500	Utility Services	Service Tie-in - Fire Protection	Material	1.00	Each
13	02 500	Utility Services	Sanitary Waste Line	Material	150.00	Linear Ft
14	02 500	Utility Services	Service Tie-in - Sanitary	Material	1.00	Each
15	02 500	Utility Services	Manholes - Sanitary	Material	2.00	Each
16	02 500	Utility Services	Storm Drainage Line	Material	150.00	Linear Ft
17	02 500	Utility Services	Service Tie-in - Storm Drainage	Material	1.00	Each

Figure 3B. Budget management functionality provides detailed budgeting capabilities

Cost management is an integral part of Oracle Primavera Cloud, delivering functional capabilities that form the backbone of strong project controls.

SCOPE MANAGEMENT

Project managers need a set of tools to effectively manage the entire scope of work required to deliver a product or service. Oracle Primavera Schedule Cloud Service allows project managers and

schedulers to effectively and cohesively plan and manage all aspects of scope during a project's lifecycle, including equipment deployment, cable and line installation , and project documentation—from a single platform. It also enables other stakeholders to monitor project deliverables from the same solution.

Name *	ID *	Unit of Measure	Original Quantity *	Original Productivity Rate *	Original Hours *	Revised Quantity
Oil and Fuel Storage Tank	OF ST-001					
Default PDS	Default PDS					
TANK	TANK					
Tank Shell Plate Shop Fabrication	TANK.TANK.2					
Tank Accessories and Fittings Shop Fabrication	TANK.TANK.3					
GA Drawing Tank Platforms and Handrail	TANK.TANK.3.DWG-04					
GA Drawing Tank Internal Accessories	TANK.TANK.3.DWG-07					
Center Deck Leg	SQ20	Kg	140.00kg	0.23h/kg	31.78h	140.00kg
Gauge Pole	SQ40	Kg	200.00kg	0.23h/kg	45.40h	200.00kg
Portoon Leg	SQ20	Kg	210.00kg	0.23h/kg	47.67h	210.00kg
GA Drawing Shell and Roof Nozzles	TANK.TANK.3.DWG-08					
Roof Nozzles	SQ50	Kg	70.00kg	0.63h/kg	43.75h	70.00kg
Shell Nozzles	SQ50	Kg	90.00kg	0.63h/kg	56.25h	90.00kg
GA Drawing Rolling Ladder & Rails	TANK.TANK.3.DWG-06					
Handrail	SQ90	Kg	140.00kg	0.19h/kg	26.18h	140.00kg
Ladder	SQ90	Kg	250.00kg	0.19h/kg	46.75h	250.00kg
Rail Track	SQ10	Kg	280.00kg	0.19h/kg	52.38h	280.00kg

Figure 2A. Oracle Primavera Schedule Cloud is a comprehensive project scope management tool.

The solution supports various progress measurement techniques, such as physical percent complete and rules of credit, to measure scope progress. In addition, users can assign quantity-based progress metrics to individual scope to capture progress percent complete.

MOBILE OFFERINGS

Oracle Primavera Cloud's mobile suite connects progress made on the jobsite to those managing the project while providing executives and portfolio managers the tools they need on the go.

With targeted, purpose-built native mobile applications, users enjoy powerful functionality with easy-to-use interfaces. Real-time data and alerts improve processes while allowing users to access information without internet connectivity.

Oracle Primavera Portfolios for iOS

While away from the office, executives and portfolio managers use this app to monitor the health and performance of project portfolios. It supports access to KPIs without internet connectivity. Users also can collaborate with team members with the discussions tool.

Oracle Primavera Progress for iOS & Android

Field workers have a lot going on, and communication has been a challenge in the past. With Oracle Primavera Progress for both iOS and Android, monitoring progress made on the job site has never been easier! Now, when a task is completed or resolved, those performing the actions can update the record, snap photos to show completed work, and send updates immediately to the project team.

FILE MANAGEMENT

Oracle Primavera Cloud includes robust file management functionality. Whether a high-level basis-of-design documents or detailed specifications, all documentation utilizes tight permission controls to manage access across the enterprise. Features include check-in and check-out, version control, and full text search for 500+ document types.

Built-in document viewing technology allows users to view most document types without the need to install a native application, reducing costs and complexity. Social features, including Discussions and Share functionality, enable users to review files and have greater context for more informed decision-making.

File management capabilities eliminate document duplication and allows users to link existing project files to activities, scope, field, cost, and submittals to ensure the most up-to-date and accurate information.

CONNECT WITH US



About The Eniac Corporation

Offers leading Information Technology solutions in Puerto Rico, the Caribbean and Central America, all backed by more than 25 years of solvency and commitment to its customers.

The Eniac Corporation, an authorized Oracle Partner.



+1 (787) 793.4044



info@eniac-corp.com



<https://www.eniac-corp.com>

<https://www-eniac-corp.com/cloud.html>

Integrated Cloud Applications & Platform Services

Copyright © 2019, Oracle and/or its affiliates. All rights reserved. This document is provided for information purposes only, and the contents hereof are subject to change without notice. This document is not warranted to be error-free, nor subject to any other warranties or conditions, whether expressed orally or implied in law, including implied warranties and conditions of merchantability or fitness for a particular purpose. We specifically disclaim any liability with respect to this document, and no contractual obligations are formed either directly or indirectly by this document. This document may not be reproduced or transmitted in any form or by any means, electronic or mechanical, for any purpose, without our prior written permission.

This device has not been authorized as required by the rules of the Federal Communications Commission. This device is not, and may not be, offered for sale or lease, or sold or leased, until authorization is obtained.

Oracle and Java are registered trademarks of Oracle and/or its affiliates. Other names may be trademarks of their respective owners.

Intel and Intel Xeon are trademarks or registered trademarks of Intel Corporation. All SPARC trademarks are used under license and are trademarks or registered trademarks of SPARC International, Inc. AMD, Opteron, the AMD logo, and the AMD Opteron logo are trademarks or registered trademarks of Advanced Micro Devices. UNIX is a registered trademark of The Open Group. 0819



Oracle is committed to developing practices and products that help protect the environment